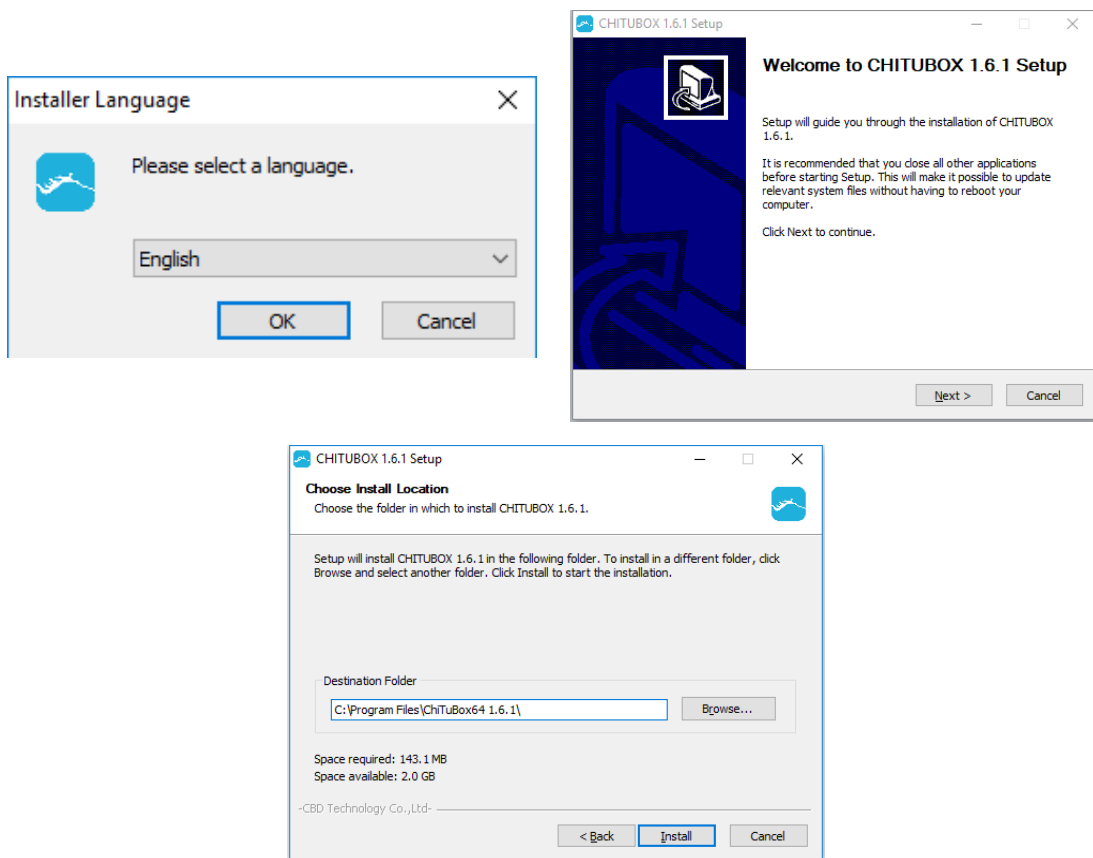
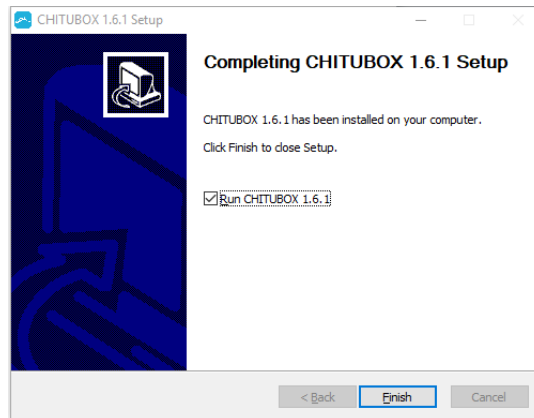


Export lgs30 File in CHITUBOX

1. Software Installation

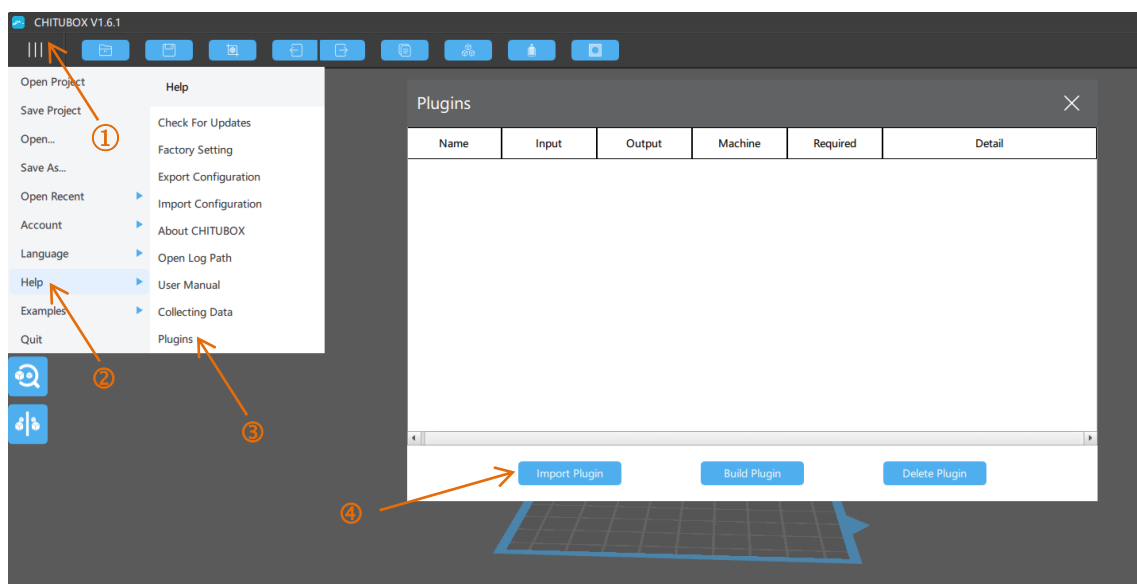
Double click the “[CHITUBOX64Install_1.6.1.exe](#)” , install the software according to the installation wizard (the exe file is located in software folder, or you can download last version from <https://www.chitubox.com/download.html>).





2. Import Plugin

Click [Help](#) and select [Plugins](#), and then import the plugin matches the operation system you currently use. If your system is Windows-64bit, you might import the plugin named [Longer3d-Orange30-Windows64bit.CHplugin](#), which is located in software folder, or you can get last version from link: [plugin download](#).

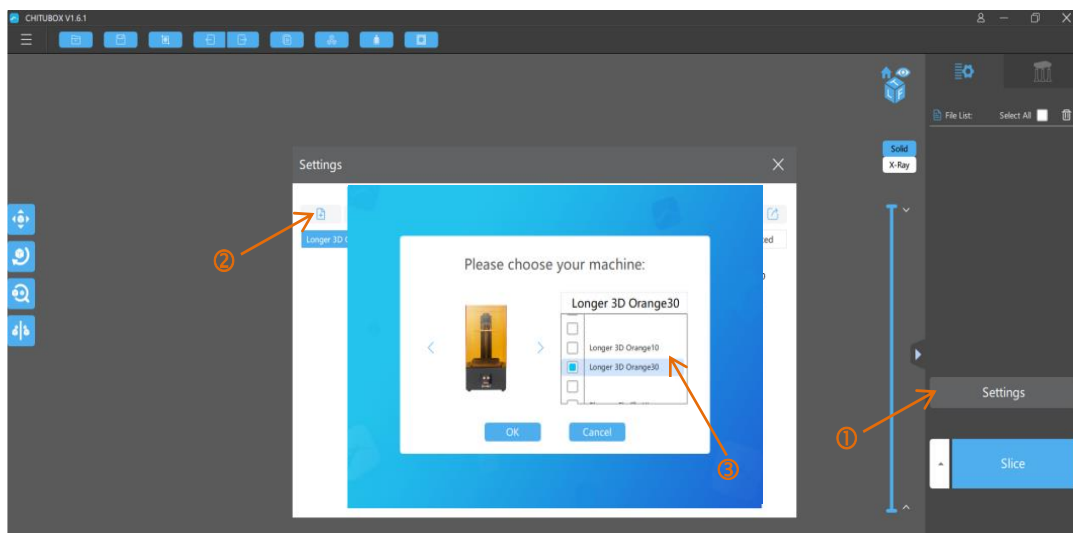


Plugins ✕					
Name	Input	Output	Machine	Required	Detail
Longer Orange30	--	lgs30	Longer 3D Orange 30	>V1.6.0(OK)	This plugin is used to convert chitubox gf file to longer lgs30 file.

3. Software Operation

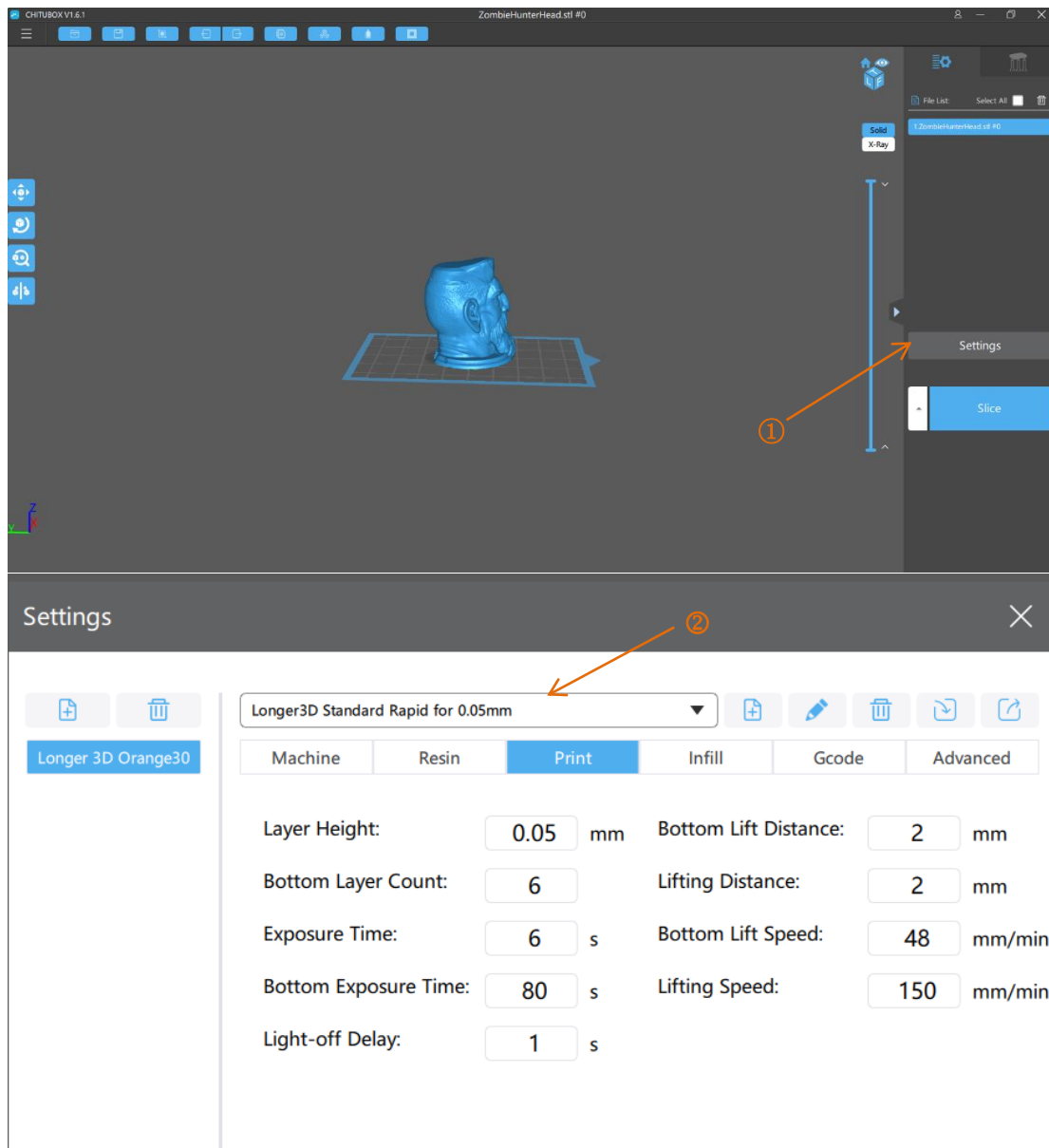
3.1 add Orange30 3D printer

Click [Settings](#), add Longer 3D Orange30 printer from the list.



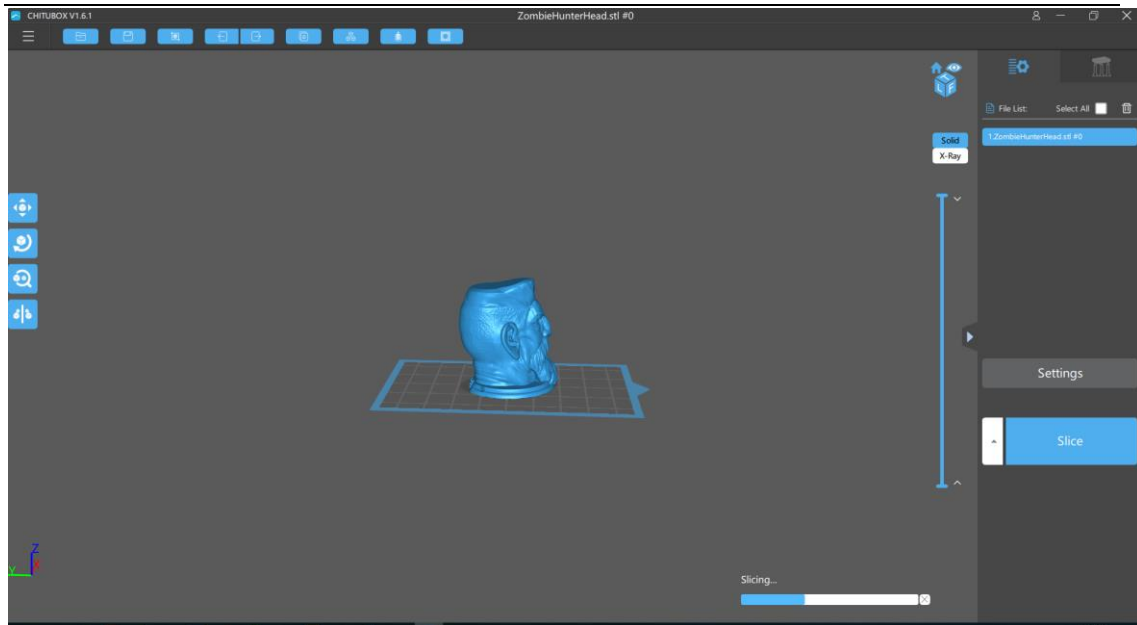
3.2 import stl model

Import and edit the stl model, click [Settings](#) and select the corresponding printing parameters profile from the list. Take the Longer3D standard rapid for 0.05mm profile as an example, which is suitable for different colors of LONGER standard rapid resin, such as light brown, gray, clear and so on.



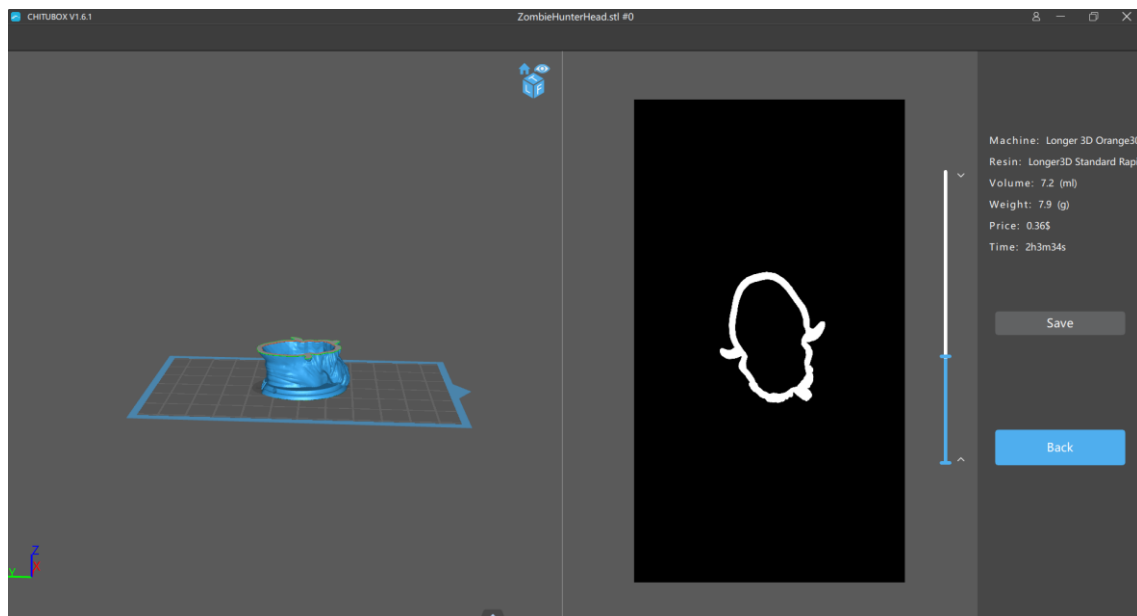
3.3 slice the model

If you settings is ready, click the [Slice](#) button. Then wait for the slice process to finish.



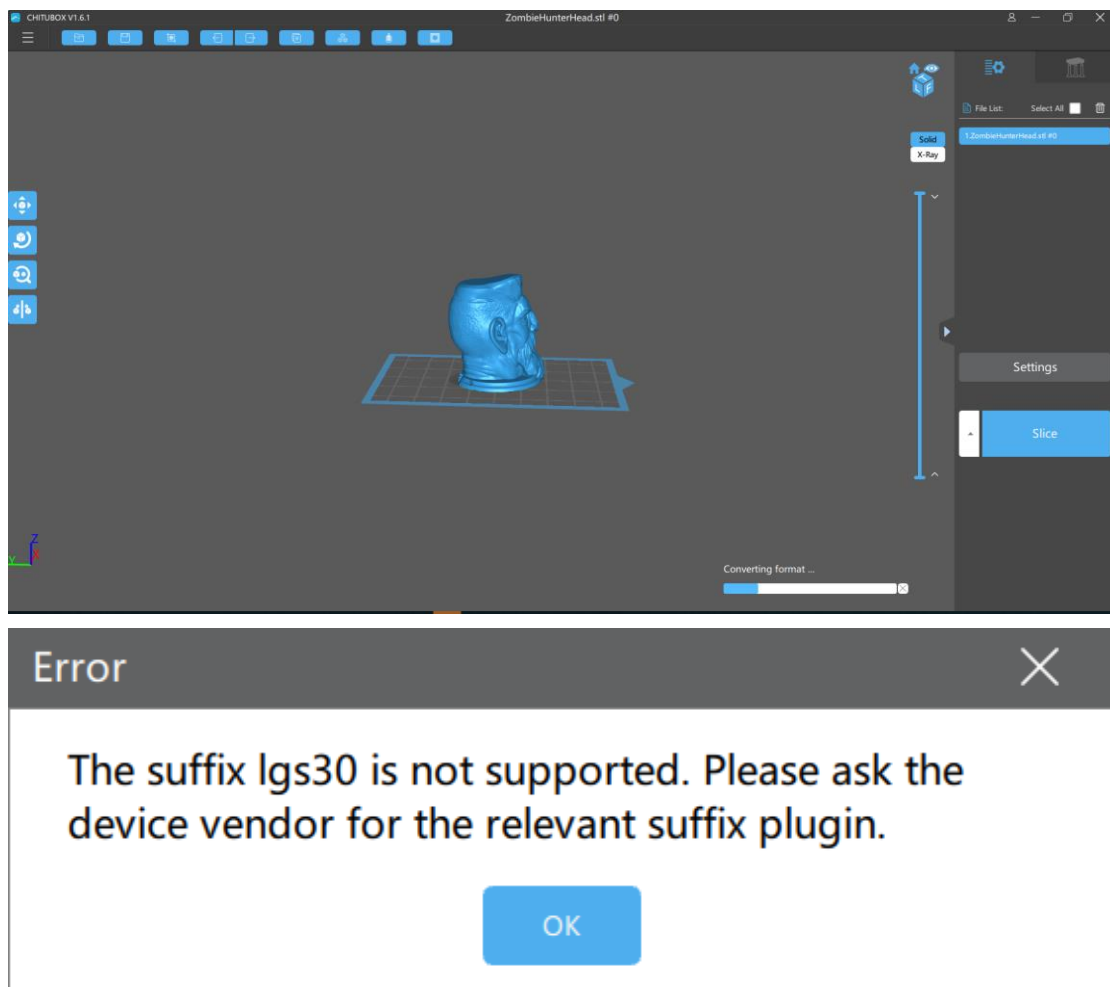
3.4 export to lgs30 file

Preview the sliced images, click [Save](#) and select file directory to save lgs30 file. The lgs30 file is saved after the process of converting format is finished.



4. Trouble Shooting

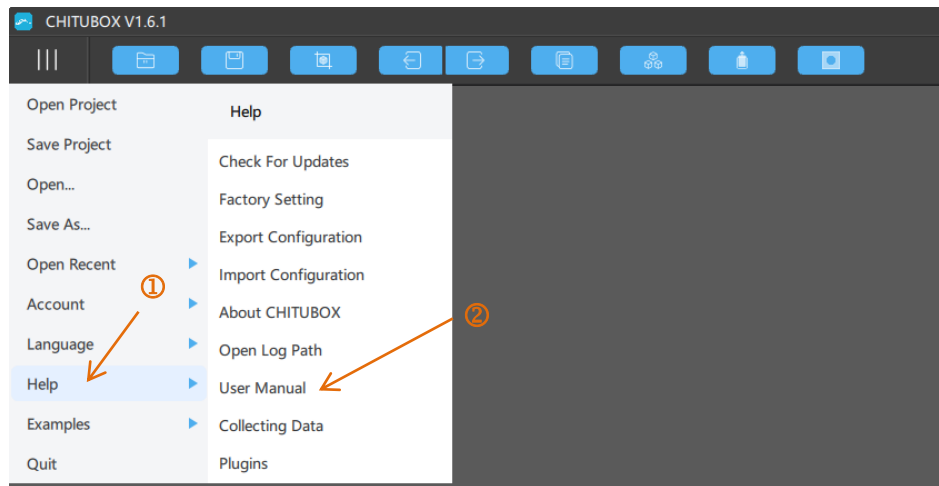
4.1 Question: I can't save as lgs30 file, it just pops up an error dialog prompting a message: *"The suffix lgs30 is not supported..."* . What's wrong with it?



Answer: If the above error appears, please install the plugin firstly.

4.2 Question: I need more detailed user operation manual for CHITUBOX software, where to find it?

Answer: Detailed software operation please refers to user manual of CHITUBOX, which is located in manual folder or you can click Menu-> Help->User Manual to find it.



4.3 Question: When I import plugin in CHITUBOX, it just pops up an error message: "The file is not a valid plugin" . What should I do?

Answer: Please import the plugin matches the operation system you use. For instance, you might select plugin named "Longer3d-Orange30-Windows64bit.CHplugin" if your system is Windows-64bit.

Revision: 12/ 19/2019